

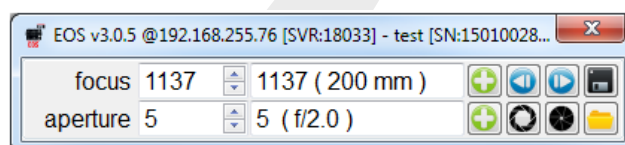
# EOS Lens Controller



The ILA\_5150 EOS Lens Controller allows remote control of Canon EOS lenses via software over standard ethernet giving the user the freedom to use long cables and the existing network structure. The ILA\_5150 EOS Lens Controller takes command of the motors and encoders built into the lenses, for fast, precise and trouble free focus and aperture control.

Canon EOS lenses have built in motors and encoders for both focus and aperture control. The accuracy with which these can be controlled depends on the resolution of the encoders. Most Canon lenses have focus encoders with 1000 to 2000 steps between close range and infinity and iris encoders with steps for each  $\frac{1}{2}$  to  $\frac{1}{4}$  aperture stop. This means that both controls can be set with excellent resolution and repeatability. The USM type lenses are built with Canon's extremely fast and silent ultrasonic motors and are ideal for fast auto focus systems.

The EOS Controller comes with a robust mechanical mount for Canon EOS lenses. Attached is the controller which is powered by a standard wall power supply. The controller is connected via standard ethernet to a workstation. The control software "ILA5150 EosControl" is also included which can accept external commands as well as direct control through the GUI.

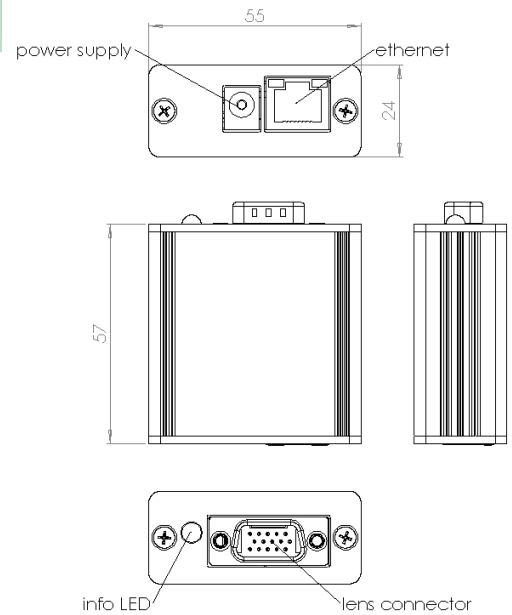
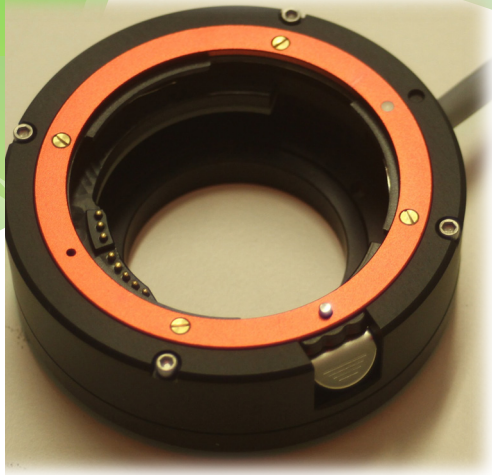


**Data Sheet**  
**June 2024**

ILA\_5150 GmbH  
Rotter Bruch 26a  
52068 Aachen - Germany  
Fon +49(0)241 95789-814  
info@ila5150.de, www.ila5150.de

**ila5150**  
GmbH

# EOS Lens Controller



## Features:

- control via ethernet
- control/read focus
- control/read aperture
- read zoom (for manual zoom lenses)
- read additional lens data (serial number, min/max aperture etc.)
- mount/unmount lenses at any time
- easy adaptation to ILA Scheimpflug camera mounts
- comfortable control software included
- simple ASCII commands allow custom implementations
- fits to any camera (e.g. C-mount, M42, M45)

## Specifications – Lens Mount

Diameter:	Ø76 mm
Height:	16mm (excluding camera mount)
Weight:	0.2 kg

## Specifications – Controller

Dimensions:	57x55x24 mm
Weight:	0.2 kg
Power supply:	9 ... 15Vdc (inner pin positive)

**Data Sheet**  
**June 2024**

ILA\_5150 GmbH  
Rotter Bruch 26a  
52068 Aachen - Germany  
Fon +49(0)241 95789-814  
info@ila5150.de, www.ila5150.de

**ila5150**  
GmbH